

Large Cases Unit in Italy

THE MAIN OBJECTIVE is to keep the internal users informed on the main restructuring events of the top Groups:

- by strengthening cooperation across the various domains;
- by sharing information of restructuring cases;
- by creating specific data reporting for single Groups;
- by developing methods to promptly identify consistency problems.

Team
Network
Part-time staff
Top 140 Groups

LCU Monitoring Activities

Istat Business Portal

All the communications sent by the units in the target through the Istat Business Portal are analyzed.

LCU is intended to build up a database for the signals on potential complex restructuring events.

Evaluation of the communications from a Group perspective.

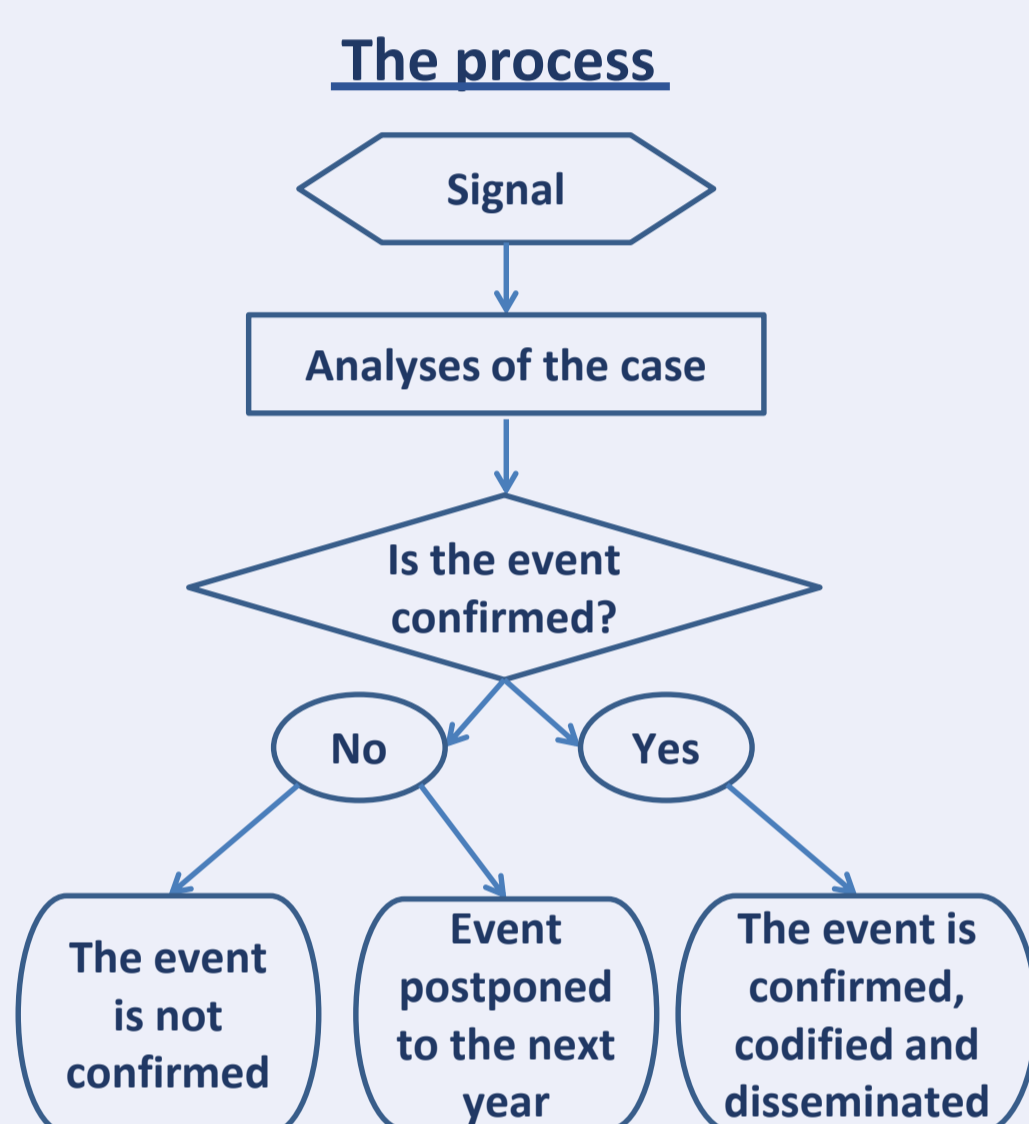
=> 109 Groups (almost 84% of the target population) and a total of 592 companies (17.4% of the target population) communicate via Istat Business Portal.

=> in the last three years, 944 communications associated to 1,087 tasks were received.

Number of tasks for variable	Absolute value	Percentage value
Structural changes	291	26.77
Status	83	7.64
Economic activity	165	15.18
Unit names	215	19.78
Legal forms	58	5.34
Insolvency proceedings	29	2.67
Administrative offices	246	22.63
Total	1087	

Specialized newspapers

Daily activity => Capturing signals (acquisitions and mergers/split-offs) about events with large implications at national and international level.



Monitoring Results	Absolute value	Percentage value
Confirmed during the year	74	61
Confirmed during the first quarter 2018	4	3
Confirmed but ongoing	15	12
Not confirmed	29	24
Total	122	

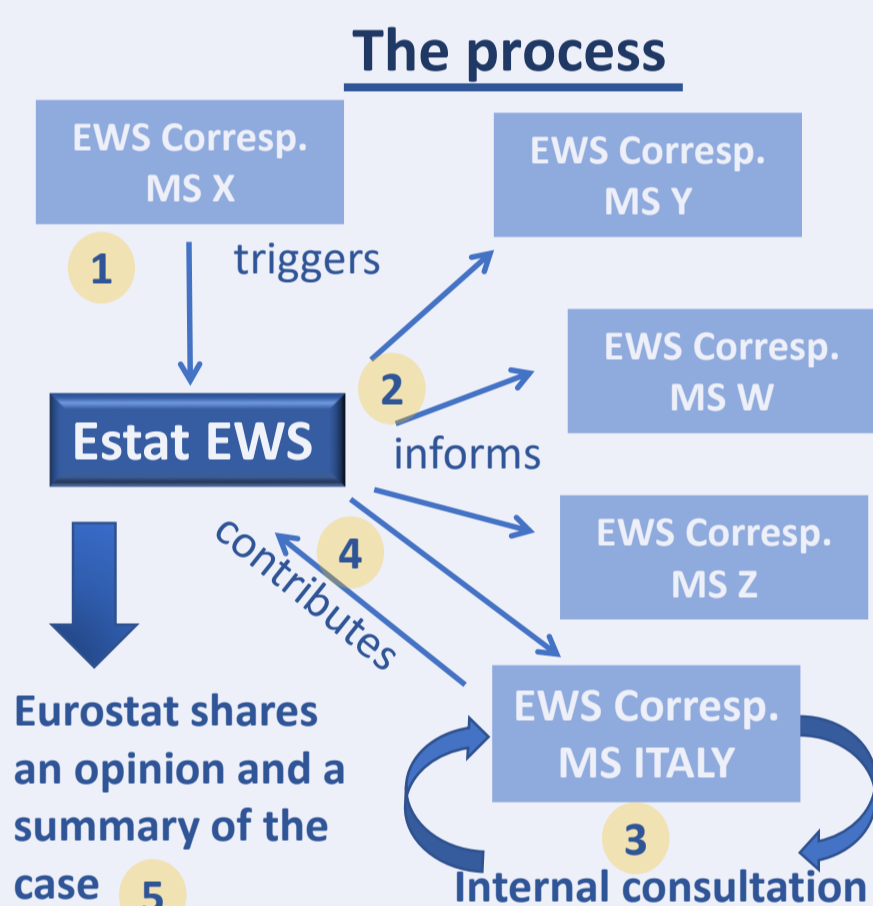
EWS

The Early Warning System was launched in 2017 by Eurostat:

- to ensure a consistent treatment;
- to enhance the timely exchange of information of globalization events in statistics.

Privacy issue

- Only public and descriptive information are shared.
- Cases anonymized.



Opinion => Recommendations on treating the case in the field of statistics, shared with the MS concerned and then with all EWS.

Case Assessment

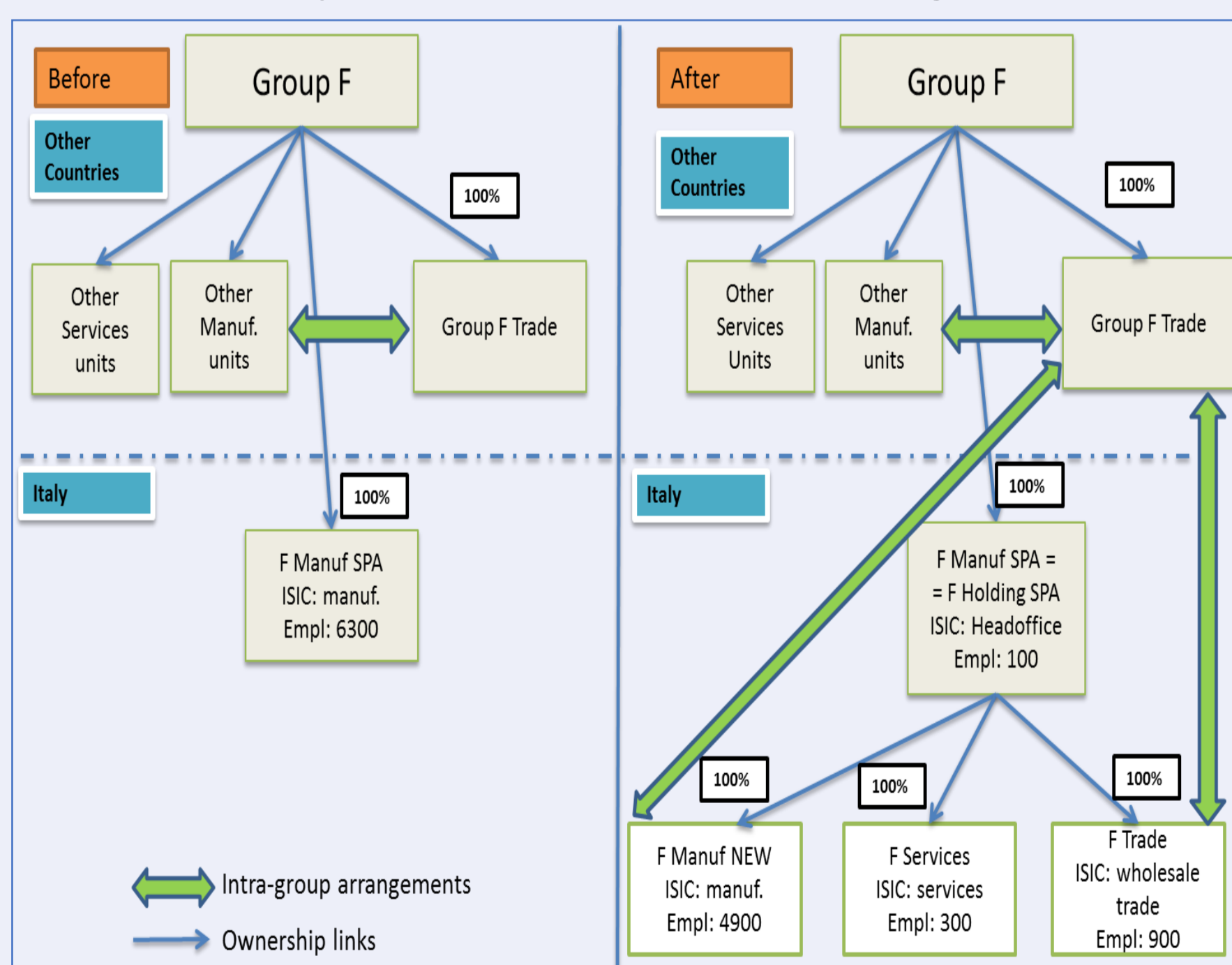
Complex restructuring of the Business Groups:

- different shapes based on the business models adopted;
- strategic and worldwide plans or local strategies (e.g. fiscal purposes);
- reaction to crisis, new business opportunities.

Reports

- description of the events;
- monitoring activity signals;
- data available;
- impact
 - statistical units (Groups, enterprises, legal units and partially local units);
 - variables (employment, turnover, economic activity, location);
- outcome of the preliminary analysis:
 - proposals/decisions for the involved domains;
 - list of the involved statistical units (names and Register codes);
 - contributors and contact persons for the cases.

Reports - scheme for the main changes



Future perspective for the LCU

- To strengthen experts network and the variables under analysis, particularly from a Sector Service Statistics perspective.
 - ➔ Mutual benefits such as more signals; more news; Group views; complex cases.
- To increase the knowledge concerning fiscal and accounting aspects.
- To enhance the cooperation with the Directorates for Data Collection and National Accounts.