

STATISTICS SWEDEN

27TH Voorburg Group Meeting

Warsaw, Poland
1-5 October 2012

Mini-presentation on Turnover / Output

**Turnover and Output for the
Commercial and Industrial Ma-
chinery Repair and Maintenance
Industries in Sweden**

Johan Åhman (johan.ahman@scb.se)
Jonas Färnstrand (jonas.farnstrand@scb.se)

Contents

<i>1. Definition of service being collected</i>	<i>2</i>
<i>2. Unit of measure being collected</i>	<i>2</i>
<i>3. Market conditions and constraints</i>	<i>2</i>
<i>4. Standard classification structure and product details/levels</i>	<i>4</i>
4.1 Industrial classification	4
4.2 Product classification	5
<i>5. Evaluation of standard vs. definition and market conditions</i>	<i>6</i>
<i>6. National Accounts Concepts and measurement issues related to GDP measurement... 6</i>	
6.1 Annual GDP.....	6
6.2 Quarterly GDP	7
<i>7. Turnover data methods and criteria for choosing different output methods.....</i>	<i>7</i>
7.1 Short-Term Statistics.....	7
7.2 Structural Business Statistics	8
7.3 Prodcom	9
<i>8. Evaluation of comparability of turnover data with price index practices.....</i>	<i>10</i>
<i>9. Summary.....</i>	<i>10</i>
<i>Annex 1 – Product breakdown in SBS.....</i>	<i>11</i>
<i>Annex 2 – Product breakdown in Prodcom</i>	<i>13</i>

1. Definition of service being collected^{1 2}

The statistical classification of NACE 33 *Repair and installation of machinery and equipment* (hereinafter referred to as repair and maintenance) in the European Union (NACE Rev. 2) is belonging to section C *Manufacturing*. According to NACE Rev. 2 (as well as the Swedish national classification SNI2007) division 33 contains enterprises engaged in specialised repair and maintenance of goods produced in the manufacturing sector with the aim to restore machinery, equipment and other products to working order and ensure these work efficiently. The division only contains specialised repair and maintenance activities and not similar activities produced by manufacturers of machinery, equipment or other goods. Included in the division is also specialised installation of machinery, if this machinery is not an integral part of buildings in which case it is classified as construction. Repair and maintenance of goods that are utilised as capital goods or consumer goods is typically classified as repair and maintenance of household goods, NACE 95.24.

NACE 33 is divided into two 3-digit groups and nine 4-digit classes. The two 3-digit groups are basically a distinction between repair and maintenance services (NACE 33.1) on the one hand and installation services (33.2) on the other. The repair and maintenance services are broken down into repair of fabricated metal products (33.11), machinery (33.12), electronic and optical equipment (33.13), electrical equipment (33.14), ships and boats (33.15), aircraft and spacecraft (33.16), other transport equipment (33.17) and other equipment (33.19). There is no further breakdown of group 33.2.

2. Unit of measure being collected

The unit of measure being collected is turnover in local currency, Swedish krona (SEK). This measure of turnover is excluding VAT and other taxes and subsidies.

3. Market conditions and constraints

In 2010, there were 5 400 enterprises performing repair and maintenance activities, with 16 000 employed, a turnover of 32 SEK billion (≈ 3.3 € billion) and value-added of 11 SEK billion (≈ 1.2 € billion).

Table 1: Basic data on repair and maintenance 2010 (enterprise level)

Variable	33.11	33.12	33.13	33.14	33.15	33.16	33.17	33.19	33.20	Total
No. of enterprises	172	3 173	121	144	974	151	45	68	596	5 444
No. of employed	583	7 129	403	499	1 455	1 307	2 525	385	2 452	16 738
Net turnover, SEK million	1 195	12 353	509	955	2 842	4 343	4 197	591	4 757	31 742
Value added, SEK million	419	4 552	257	356	945	1 158	1 418	213	1 733	11 129
Total assets, SEK million	594	9 651	796	540	2 164	4 139	3 060	230	11 358	32 531
Net investments, SEK million	16	291	11	8	120	15	42	5	76	585

Source: SBS 2010, Statistics Sweden

¹ NACE Rev. 2 Statistical classification of economic activities in the European Community

² SNI2007 Swedish Standard Industrial Classification 2007

NACE 33 contributes to 0.5 percent of total turnover and 0.6 percent of value added in the Swedish business sector (excluding financial services). It contributes to 2.0 percent of turnover and 2.3 percent of value added within the manufacturing sector (NACE 10-33).

Table 2: Basic data on repair and maintenance 2010 (enterprise level)

Size class by no. of employed

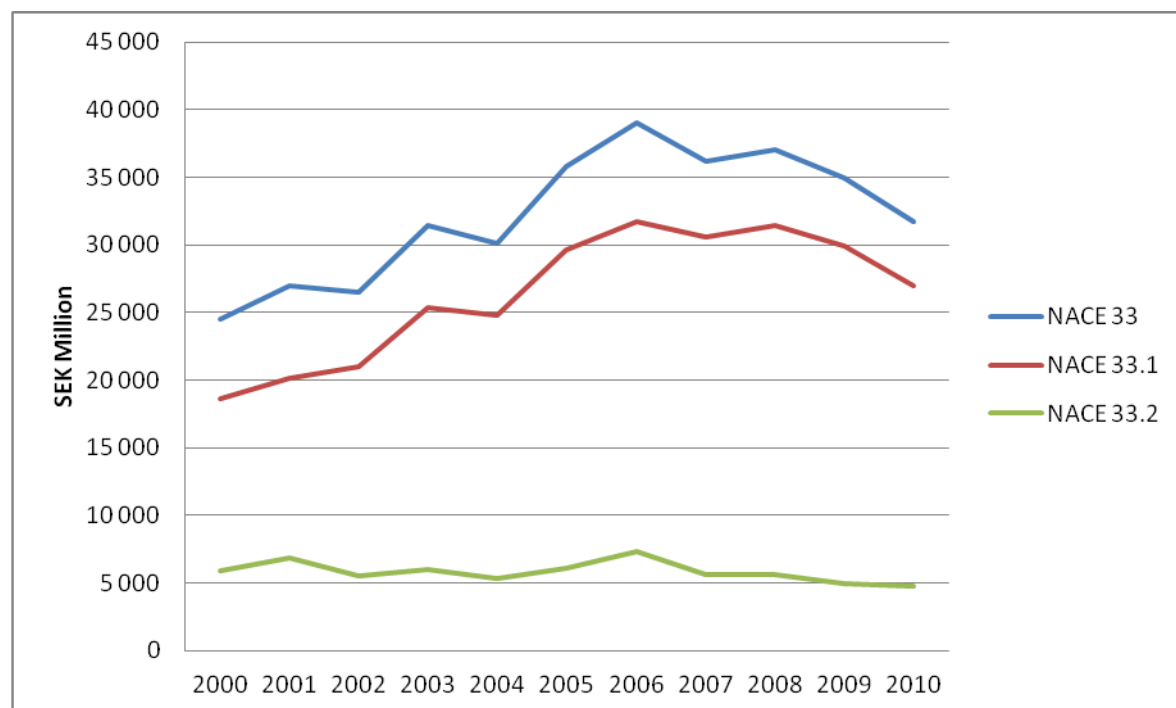
Variable	0-9	10-49	50-249	250+	Total
No. of enterprises	5 172	227	39	6	5 444
No. of employed	4 634	4 010	4 216	3 878	16 738
Net turnover, SEK million	8 589	6 648	6 957	9 548	31 742
Value added, SEK million	3 005	2 429	2 972	2 723	11 129
Total assets, SEK million	18 079	3 732	3 257	7 464	32 531
Net investments, SEK million	287	111	133	53	585

Source: SBS 2010, Statistics Sweden

As in most industries, a small number of large enterprises produce a large part of turnover and value added. As seen in table 2 above six enterprises produce 30 percent of turnover and 25 percent of value added. Almost the entire industry is privately owned with either domestic or foreign owners, the exception being some parts of NACE 33.17 involved in railroad transport equipment that are state-owned.

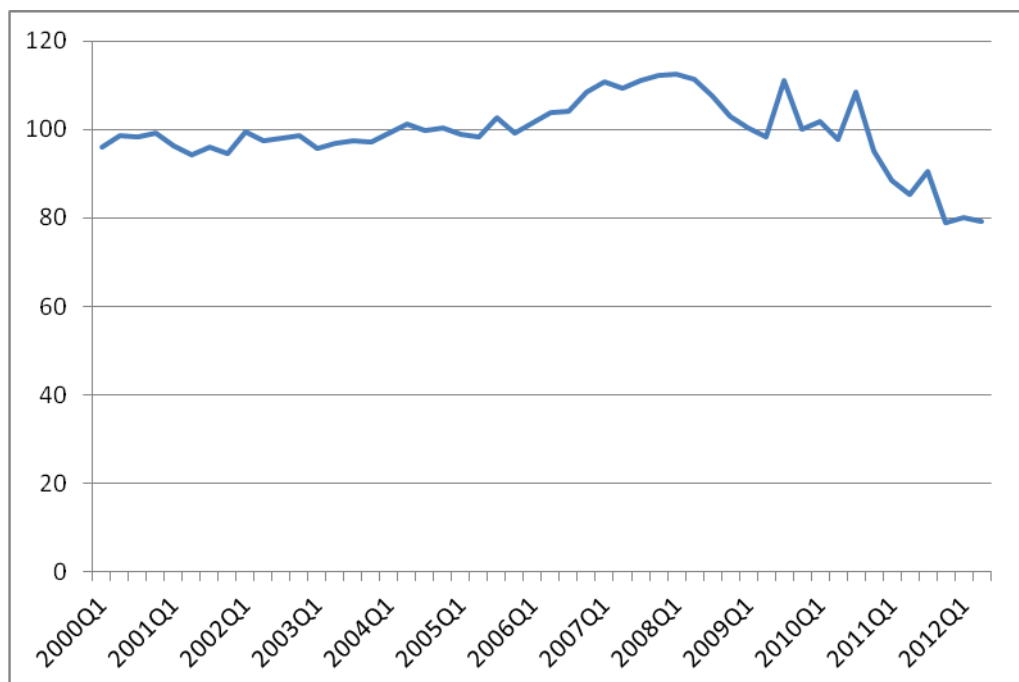
Figure 1 below shows the development of turnover in SEK million over the last decade on kind-of-activity (KAU) level.

Figure 1: Turnover in repair and maintenance 2000-2010 (KAU), SEK million



Source: SBS 2000-2010, Statistics Sweden. Values for the period 2000-2006 are back-cast.

The market is naturally depending on other sectors of the economy, such as supply of electricity or various transport industries. For example, the eruption of the volcano Eyjafjallajökull in Iceland in 2010 kept many aircraft grounded for long periods of time and thus in less need of repair and maintenance.

Figure 2: Industrial production index in repair and maintenance 2000Q1-2012Q2 (2005=100)

Source: Industrial production index 2000-2012, Statistics Sweden

4. Standard classification structure and product details/levels

4.1 Industrial classification^{3 4 5}

The national industrial classification, *Standard för svensk näringsgrensindelning 2007 (SNI2007)*, is based on NACE Rev. 2 but has an additional hierarchical level, the five-digit level. For the repair and maintenance sector, SNI2007 is equal to the NACE Rev. 2 classification. Although there is a possibility in the national classification to divide the NACE class into a 5-digit level, this is not the case in this sector. The complete break-down of the repair and maintenance sector can be seen in table 3 below:

Table 3: Industrial classification of repair and maintenance

NACE Division	NACE Group	NACE Class	SNI 5-digit level	Name	ISIC Rev. 4
33				Repair and installation of machinery and equipment	
	33.1			Repair of fabricated metal products, machinery and equipment	
		33.11	33.110	Repair of fabricated metal products	3311
		33.12	33.120	Repair of machinery	3312
		33.13	33.130	Repair of electronic and optical equipment	3313
		33.14	33.140	Repair of electrical equipment	3314
		33.15	33.150	Repair and maintenance of ships and boats	3315
		33.16	33.160	Repair and maintenance of aircraft and spacecraft	3315
		33.17	33.170	Repair and maintenance of other transport equipment	3315

³ NACE Rev. 2

⁴ Swedish Standard Industrial Classification 2007 (SNI 2007)

⁵ ISIC Rev. 4

	33.19	33.190	Repair of other equipment	3319	
	33.2	33.20	33.200	Installation of industrial machinery and equipment	3320

ISIC Rev. 4 differs slightly from NACE Rev. 2. ISIC bundles all transport equipment into one class, 3315, whereas NACE separates modes of water and air transport from other transport.

In line with NACE Rev. 2, the national industrial classification replaced the previous version (SNI2002/NACE Rev. 1.1) starting with reference year 2008. The Swedish Business Register contained both versions for reference years 2007 and 2008 and results were also published in both versions. Starting with reference year 2009 results will only be published in the new classification.

With backcasting, results for both short-term (STS) and structural business statistics (SBS) are available from 2000 in the new classification.

4.2 Product classification^{6 7 8}

The national product classification, *Standard för svensk produktindelning efter näringsgren 2007 (SPIN2007)*, is in most parts equal to the CPA 2008 classification. The code structure is slightly different (seven-digit code in national classification versus six-digit code in CPA) but all products within CPA 33 have a one-to-one relationship. In the international CPC classification, repair and maintenance belongs in division 87.

In table 4 below is a short description of the SBS product classification regarding repair and maintenance. As can be seen in chapter 6.1 the turnover by product is taken from the Prodcom survey but the table gives a good overview of the product content of the industry. Please see appendix 1 for a full breakdown of the products used in the SBS and appendix 2 for a full breakdown of the products in Prodcom.

Table 4: Classification of products for waste management

Variable	SPIN 2007	CPA 2008	Name
v2941	33.110.01-05	33.11.11-19	Repair of metal products
v2942	33.120.01-18	33.12.11-29	Repair of machinery
v2943	33.130.01-04	33.13.11-19	Repair of electronic and optical equipment
v2944	33.140.01-02	33.14.11-19	Repair of electrical equipment
v2945	33.150.00, 33.160.00, 33.170.01-02	33.15.10, 33.16.10, 33.17.11-19	Repair of transport equipment
v2946	33.190.00	33.19.10	Repair of other equipment
v2947	33.200.01-18	33.20.11-70	Installation of industrial machinery and equipment

The product breakdown in the SBS follows the CPA classification on the 4-digit level except for transport equipment. All transport equipment are bundled together into one variable. There is no case of product breakdown being more detailed than industry breakdown.

⁶ CPA 2008

⁷ Swedish Standard Classification of Products 2007

⁸ CPC Version 2

Regarding the demands from National Accounts (NA) there is at the moment no plans to divide the CPA into more detailed products.

As with the industrial classification SPIN2007/CPA 2008 replaced the older version starting with reference year 2008. For NA purposes results for structural business statistics were delivered in both versions for reference years 2007 and 2008.

5. Evaluation of standard vs. definition and market conditions

As can be seen in the table below, most of the production of repair and maintenance activities takes place within the industry. A large part of the industry's turnover is also classified as industrial production.

Table 5: Turnover by product and industry 2010, SEK million, SBS

Industry	33.11	33.12	33.13	33.14	33.15	33.16	33.17	33.19	33.20	Other	Total
Product											
33.11	0	0	0	0	0	0	0	0	0	0	0
33.12	307	3 675	8	18	0	0	0	7	76	248	4 340
33.13	0	0	46	48	0	0	0	19	0	10	123
33.14	0	0	33	558	0	0	0	31	0	128	750
33.15-17	0	0	0	0	2 020	4 076	3 493	0	0	65	9 654
33.19	0	0	8	19	0	0	0	8	0	134	169
33.20	0	0	0	0	0	0	0	0	2 052	475	2 527
Ind. prod.	802	7 726	346	170	326	130	476	290	2 295	-	-
Other	86	952	68	142	496	137	228	236	334	-	-
Total	1 195	12 353	509	955	2 842	4 343	4 197	591	4 757	-	-

Source: SBS 2010, Statistics Sweden

The output of repair and maintenance activities outside the industry mainly comes from wholesale and retail trade (NACE 46 and 47), water transport (NACE 50) and architectural and engineering activities (NACE 71). In the case of the repair and maintenance in trade industries, there is a possibility that at least part of this should in fact belong in repair of household goods (NACE 95.24) instead, as mentioned in section 1.

6. National Accounts Concepts and measurement issues related to GDP measurement⁹

6.1 Annual GDP

Since 1997, the main source for annual output calculations has been the SBS, although other sources are used when appropriate. For the manufacturing industries, including NACE 33, the survey on industrial production (Prodcom) is an important source of information. Together with the SBS, Prodcom and the survey on intermediate consumption contains detailed information on both income and intermediate consumption.

The total value of output is the sum of industrial production and income from other activities by industrial activity units. Estimates on total output are based on the SBS with a detailed breakdown on different products from Prodcom. The total estimates of intermedi-

⁹ ESA95 GNI Inventory, Sweden, Reference Year 2005, Revision 5, October 2009

ate consumption are based on the SBS. For the detailed break-down the survey INFI (Intermediate consumption within the manufacturing industries, an intermittent survey measuring detailed cost structures) is used. Value added for each industry is obtained as the difference between output value and intermediate consumption value.

Although turnover by product is gathered in both the SBS and Prodcom, at present only the Prodcom data is used in the NA framework.

6.2 Quarterly GDP

For quarterly GDP, the value is calculated either by extrapolating the value in the NA system using an indicator, using data directly from a source or by using a model. The single most important source for the quarterly NA calculations within the manufacturing industries is the Industrial Production Index (IPI). IPI measures the development of the manufacturing industries deliveries of goods (in some industries, however not in repair and maintenance, production is measured) which is then deflated using the Producer Price Index (PPI). IPI is used as an indicator for the development of production in the NA. Since NA is supposed to measure growth of value added adjustments are made to the IPI.

IPI somewhat differs in concept and coverage from the NA. As mentioned IPI mainly measures deliveries and not actual production. NA also covers the whole industry in question whereas IPI only covers enterprises with ten employees or more. Furthermore there are differences in the way IPI and NA are weighted which makes it difficult to compare the growth in the two indices. Because of these differences in concept and coverage, IPI is sometimes overlooked in the calculations of NA.

7. Turnover data methods and criteria for choosing different output methods

Three EU-regulated surveys are used to collect information on turnover in the business part of the repair and maintenance sector. Short-Term Statistics collect industry-level turnover monthly/quarterly and Structural Business Statistics together with Prodcom collect turnover on industry-level as well as product-level annually.

7.1 Short-Term Statistics

Turnover in the repair and maintenance sector is published on a monthly, quarterly and annual basis in accordance with Council Regulation of Short Term Statistics, EG 1165/98. The statistical unit as well as the unit of collection is enterprise. Results are only presented as development indices and not as absolute values.

The short-term statistics is a sample survey, with a total sample size of approximately 2 000 enterprises. The sample is stratified by industry and size class.

Results are published 40 days after the end of the time period in question. Results are adjusted for season and other calendar effects. The results are mainly used by the NA in their calculations of private consumption and Gross Domestic Product (GDP). In theory, NA would need the turnover divided into product groups, but due to the response burden

only total turnover is collected. This turnover is then divided into product groups with various keys to meet the requirements of short-term NA calculations.

Administrative data is not used as input in the calculations at present.

7.2 Structural Business Statistics

Structural Business Statistics is a survey carried out annually in accordance with “Regulation (EC) No. 295/2008 [...] concerning structural business statistics” (the regulation consists of a number of annexes and the description below is valid for annexes I-IV and VIII, or NACE 05-82 (excluding 64-66) and 95). Furthermore, detailed results (much more detailed than demanded in the above mentioned regulation) of the survey are delivered to National Accounts. In its current format, the SBS has been produced since 2003.

Information is collected on enterprise level or in some cases KAU level. The statistical unit for NA purposes is KAU. Results are published on enterprise (institutional) level as well as KAU (functional) level and for some variables local KAU (regional) level. The regional information is produced via a model-based approach.

The survey is based on administrative data, more precisely on income and balance sheet statements from the Swedish Tax Agency (Skatteverket). Three separate sample surveys (specification of income sheet, specification of investments and specification of shares) are carried out to provide more detailed information. In addition to this, the 600 largest enterprises in the business sector are surveyed separately.

The administrative data is, at least in theory, available for the entire population of around 1 000 000 enterprises. Non-response in administrative data (15-20 percent un-weighted, 3 percent weighted) are dealt with through mean value imputations based on industry and size class. This material is used for what is called the common variables within the income and balance sheet statements, such as turnover, other operating incomes, depreciation costs, personnel costs and total assets. Tax material was used for 5 441 enterprises in the repair and maintenance sector in 2010. Non-response was 14 percent un-weighted and 5 percent weighted for turnover.

The 600 largest enterprises in the business sector are surveyed independently of the tax data. This is due to their importance to the business sector (roughly one-third of value added) and their often complex organisations. These enterprises are asked to complete a questionnaire consisting of a detailed income statement (including turnover by product but also for example more detailed cost statements), a balance sheet statement, a specification of investments and a specification of shares. The response rate for these enterprises have been 100 percent in recent years. Three enterprises within the repair and maintenance sector was surveyed this way 2010.

The specification of income statement is used to get more detailed information, e.g. turnover by product, for the remaining enterprises. A sample of some 16 000 enterprises is used for this part of the survey, allocated in 300 strata based on the demands of NA. 107 enterprises in four strata were sampled in the repair and maintenance sector 2010. The sample method used is π ps, i.e. probability proportional to size. The response in this sur-

vey is usually around 80-85 percent un-weighted and 88-90 percent weighted. The response rate in the repair and maintenance sector was 82 percent un-weighted and 90 percent weighted for turnover for reference year 2010.

Besides being an important input in the NA calculations, the collection of turnover by product is also an important input in the Business Register. The detailed information makes it possible to detect any change in activity within the enterprises, and thus keep the Business Register as updated and correct as possible.

Results are compared with STS and other short-term indicators for consistency. Preliminary results are transmitted to Eurostat 10 months and definitive results 18 months after the end of the reference period. Definitive detailed results are transmitted to NA 15 months after the end of the reference period. Preliminary and definitive results are also published in on-line databases, 12 months and 17 months after the end of the reference period respectively. Results are published on the national 5-digit level of NACE where applicable.

7.3 Prodcocom

PRODCOM is an annual survey carried out in accordance with "Council Regulation (EEC) No 3924/91", "Commission Regulation (EC) No 912/2004" and "Commission Regulation (EU) No 860/2010".

The statistical unit is "control number" which in most cases is equal to KAU or the enterprise but some control numbers are equal to local units. All enterprises in NACE 05-33 with 20 or more employees are surveyed. For NACE 08, 20.150, 23.5, 23.6, 23.7 and 23.9 all enterprises with 10 or more employees are surveyed. Enterprises with a turnover of at least SEK 50 million the previous year are surveyed regardless of their number of employees. Local units that have a manufacturing NACE but are part of an enterprise outside of the manufacturing sector are surveyed if the unit has at least 20 employees. For enterprises in the manufacturing sector that are not surveyed, administrative data from the Swedish Tax Agency is used. Their production is estimated using statistical models.

The survey collects information on total turnover which is broken down into industries by NACE codes. The manufacturing part of the turnover is specified on industrial commodities produced and industrial services taking place in Sweden. A national version of the combined nomenclature (CN) is used to collect this data. As CN is not available for the products, or more correct services, within NACE 33 artificial CN codes are created for this industry. Both the real and artificial CN codes are translated to PRODCOM codes before delivery to Eurostat. A full breakdown of products belonging in NACE/CPA 33 can be found in annex 2. Sold production by value and volume is collected and for some commodities total production by volume is collected. For industrial services only the value of sold production is collected.

For PRODCOM 2010 there were 3 744 enterprises surveyed, of which 115 in NACE 33. 89 percent responded in time for the delivery of the preliminary figures to Eurostat. Preliminary figures are available 30 June, the year after the reference year. Final figures are available 31 January 13 months after the end of the reference year.

The consistency of the production value between SBS and Prodcop are thoroughly checked both on an aggregate level as well as by industry before transmission of data to the NA.

8. Evaluation of comparability of turnover data with price index practices¹⁰

All product groups but one (33.19) within the repair and maintenance sector are covered by PPI at present although some are not published due to confidentiality issues. The measurement of prices in these industries are usually based on an hourly rate for a repairman/fitter. A large part of the turnover within the sector are bigger projects invoiced all together, making it difficult to measure a specific service over time. Although not ideal the hourly rate is both an easy and practical way for the respondent and also usually fixed over a period of time.

Development areas within the repair and maintenance sector are the measurement of export prices, although it is not a priority at present.

Producer price indices are calculated according to a Laspeyres formula.

9. Summary

The repair and maintenance industry (NACE 33) contributes to 0.5 percent of total turnover and 0.6 percent of value added in the Swedish business sector. The main part of the repair and maintenance activities are produced within the industry.

STS (industrial production index) are used for quarterly GDP calculations while SBS along with Prodcop are used for the more detailed annual accounts. SBS collects information on total turnover whereas Prodcop collects detailed information on turnover by product. The breakdown of products is on 8-digit CN level.

¹⁰ Prisindex i producent- och importled 2009

Annex 1 – Product breakdown in SBS

Variable	SPIN 2007	CPA 2008	Name
v2941	33.110.01	33.11.11	Repair and maintenance services of structural metal products
	33.110.02	33.11.12	Repair and maintenance services of tanks, reservoirs and containers of metal
	33.110.03	33.11.13	Repair and maintenance services of steam generators, except central heating hot water boilers
	33.110.04	33.11.14	Repair and maintenance services of weapons and ammunition
	33.110.05	33.11.19	Repair and maintenance services of other fabricated metal products
v2942	33.120.01	33.12.11	Repair and maintenance services of engines and turbines, except aircraft, vehicle and cycle engines
	33.120.02	33.12.12	Repair and maintenance services of fluid power equipment, other pumps, compressors, taps and valves
	33.120.03	33.12.13	Repair and maintenance services of bearings, gears, gearing and driving elements
	33.120.04	33.12.14	Repair and maintenance services of ovens, furnaces and furnace burners
	33.120.05	33.12.15	Repair and maintenance services of lifting and handling equipment
	33.120.06	33.12.16	Repair and maintenance services of office machinery and equipment (except computers and peripheral equipment)
	33.120.07	33.12.17	Repair and maintenance services of power-driven hand tools
	33.120.08	33.12.18	Repair and maintenance services of non-domestic cooling and ventilation equipment
	33.120.09	33.12.19	Repair and maintenance services of other general-purpose machinery n.e.c.
	33.120.10	33.12.21	Repair and maintenance services of agricultural and forestry machinery
	33.120.11	33.12.22	Repair and maintenance services of metal forming machinery and machine tools
	33.120.12	33.12.23	Repair and maintenance services of machinery for metallurgy
	33.120.13	33.12.24	Repair and maintenance services of machinery for mining, quarrying and construction
	33.120.14	33.12.25	Repair and maintenance services of machinery for food, beverage and tobacco processing
	33.120.15	33.12.26	Repair and maintenance services of machinery for textile, apparel and leather production
	33.120.16	33.12.27	Repair and maintenance services of machinery for paper and paperboard production
	33.120.17	33.12.28	Repair and maintenance services of machinery for plastics and rubber
	33.120.18	33.12.29	Repair and maintenance services of other special-purpose machinery
v2943	33.130.01	33.13.11	Repair and maintenance services of instruments and appliances for measuring, testing and navigation
	33.130.02	33.13.12	Repair and maintenance services of irradiation, electromedical and electrotherapeutic equipment
	33.130.03	33.13.13	Repair and maintenance services of professional optical instruments and photographic equipment
	33.130.04	33.13.19	Repair and maintenance services of other professional electronic equipment
v2944	33.140.01	33.14.11	Repair and maintenance of electric motors, generators, transformers and electricity distribution and control apparatus
	33.140.02	33.14.19	Repair and maintenance services of other professional electrical equipment
v2945	33.150.00	33.15.10	Repair and maintenance services of ships and boats
	33.160.00	33.16.10	Repair and maintenance services of aircraft and spacecraft
	33.170.01	33.17.11	Repair and maintenance services of railway locomotives and rolling-stock
	33.170.02	33.17.19	Repair and maintenance services of other transport equipment n.e.c.
v2946	33.190.00	33.19.10	Repair services of other equipment

v2947	33.200.01	33.20.11	Installation services of steam generators, except central heating hot water boilers, including installation services for metal pipe systems in industrial plants
	33.200.02	33.20.12	Installation services of other fabricated metal products, except machinery and equipment
	33.200.03	33.20.21	Installation services of office and accounting machinery
	33.200.04	33.20.29	Installation services of other general-purpose machinery n.e.c.
	33.200.05	33.20.31	Installation services of industrial machinery and equipment for agriculture
	33.200.06	33.20.32	Installation services of metal forming machinery
	33.200.07	33.20.33	Installation services of industrial machinery and equipment for metallurgy
	33.200.08	33.20.34	Installation services of industrial machinery and equipment for mining
	33.200.09	33.20.35	Installation services of industrial machinery and equipment for food, beverages and tobacco processing
	33.200.10	33.20.36	Installation services of industrial machinery and equipment for textiles, apparel and leather production
	33.200.11	33.20.37	Installation services of industrial machinery and equipment for paper and paperboard production
	33.200.12	33.20.38	Installation services of industrial machinery and equipment for plastic and rubber production
	33.200.13	33.20.39	Installation services of other special-purpose machinery
	33.200.14	33.20.41	Installation services of professional medical machinery and precision and optical instruments
	33.200.15	33.20.42	Installation services of professional electronic equipment
	33.200.16	33.20.50	Installation services of electrical equipment
	33.200.17	33.20.60	Installation services of industrial process control equipment
	33.200.18	33.20.70	Installation services of other goods n.e.c.

Annex 2 – Product breakdown in Prodcom

NACE/CPA	CN	Name
33.11	99233110	Repair and maintenance services of structural metal products
	99233110a	Repair and maintenance services of metal frames
	99233110b	Repair and maintenance services of construction elements
	99233110c	Repair and maintenance services of tanks, reservoirs and containers of metal
	99233110d	Repair and maintenance services of central heating hot water boilers
	99233110e	Repair and maintenance services of steam generators, except central heating hot water boilers
	99233110f	Repair and maintenance services of molding tools
	99233110g	Repair and maintenance services of cutting tools
	99233110h	Repair and maintenance services of other tools and utensils
	99233110i	Repair and maintenance services of other fabricated metal products
	99233110j	Repair and maintenance services of weapons and ammunition
99233110k	Repair and maintenance services of intermodal containers	
33.12	99233120	Repair of machinery
	99233120a	Repair of machinery of general mechanical form
	99233120b	Repair and maintenance services of engines and turbines, except aircraft, vehicle and cycle engines
	99233120c	Repair and maintenance services of fluid power equipment, other pumps, compressors, taps and valves
	99233120d	Repair and maintenance services of faucets and valves etc.
	99233120e	Repair and maintenance services of bearings, gears, gearing and driving elements
	99233120f	Repair and maintenance services of ovens, furnaces and furnace burners
	99233120g	Repair and maintenance services of lifting and handling equipment
	99233120h	Repair and maintenance services of non-domestic cooling and ventilation equipment
	99233120i	Repair and maintenance services of other general-purpose machinery n.e.c.
	99233120j	Repair and maintenance services of tractors
	99233120k	Repair and maintenance services of agricultural and forestry machinery
	99233120l	Repair and maintenance services of power-driven hand tools for metal processing
	99233120m	Repair and maintenance services of power-driven hand tools for processing of wood, rock, rubber etc.
	99233120n	Repair and maintenance services of machinery for metallurgy and metal forming
	99233120o	Repair and maintenance services of machinery for mining, quarrying and construction
	99233120p	Repair and maintenance services of machinery for food, beverage and tobacco processing
	99233120q	Repair and maintenance services of machinery for textile, apparel and leather production
99233120r	Repair and maintenance services of machinery for paper and paperboard production	
99233120s	Repair and maintenance services of machinery for plastics and rubber	
99233120t	Repair and maintenance services of molding forms for plastics and rubber	
99233120u	Repair and maintenance services of other special-purpose machinery	
99233120w	Repair and maintenance services of machinery for information processing	
33.13	99233130	Repair and maintenance services of electronic and optical equipment
	99233130a	Repair and maintenance services of other professional electronic equipment n.e.c.
	99233130b	Repair and maintenance services of medical and surgical equipment
	99233130c	Repair and maintenance services of instruments and appliances for measuring, testing and navigation
	99233130d	Repair and maintenance services of professional optical instruments and photographic equipment
99233130e	Repair and maintenance services of instruments for measurement of time	
33.14	99233140	Repair and maintenance of electric motors, generators, transformers and electricity distribution and control apparatus
	99233140a	Repair and maintenance of electric motors, generators and transformers
	99233140b	Repair and maintenance of electricity distribution and control apparatus
	99233140c	Repair and maintenance services of other professional electrical equipment
33.15	99233150	Repair and maintenance services of ships and boats
	99233150a	Repair and maintenance services of ships
	99233150b	Repair and maintenance services of boats
33.16	99233160	Repair and maintenance services of aircraft and spacecraft

33.17	{	99233170	Repair and maintenance services of other transport equipment
		99233170a	Repair and maintenance services of railway locomotives and rolling-stock
		99233170b	Repair and maintenance services of mobility vehicles
		99233170c	Repair and maintenance services of other transport equipment n.e.c.
33.19	{	99233190	Repair and maintenance services of other equipment
		99233190a	Repair and maintenance services of tarpaulin, camping equipment, sails, sun blinds etc.
		99233190b	Repair and maintenance services of net and rope works
		99233190c	Repair and maintenance services of pallets, load carriers, cable drums and wooden packaging
		99233190d	Repair and maintenance services of other wooden products
		99233190e	Repair and maintenance services rubber products
		99233190f	Repair and maintenance services of pipes and tubes
		99233190g	Repair and maintenance services of plastic products
		99233190h	Repair and maintenance services of glass tubes
		99233190i	Repair and maintenance services of line pipes, gutters and ceramic pipes
		99233190j	Repair and maintenance services of millstones, grindstones etc.
		99233190k	Repair and maintenance services of musical equipment
		99233190l	Repair and maintenance services of sporting equipment
99233190m	Repair and maintenance services of toys, games and sporting articles		
33.20	{	99433201	Installation services of central heating hot water boilers
		99433202	Installation services of steam generators, except central heating hot water boilers, including installation services for metal pipe systems in industrial plants
		99433203	Installation services of engines and turbines, except aircraft, vehicle and cycle engines
		99433204	Installation services of fluid power equipment, other pumps, compressors, taps and valves
		99433205	Installation services of ovens, furnaces and furnace burners
		99433206	Installation services of lifting and handling equipment
		99433207	Installation services of non-domestic cooling and ventilation equipment
		99433208	Installation services of general-purpose machinery n.e.c. (NACE 28.29)
		99433209	Installation services of agricultural and forestry machinery
		99433210	Installation services of power-driven hand tools for metal processing
		99433211	Installation services of power-driven hand tools for processing of wood, rock, rubber etc.
		99433212	Installation services of machinery for metallurgy and metal forming
		99433213	Installation services of machinery for cement industry, construction works etc.
		99433214	Installation services of machinery for mining, quarrying and construction
		99433215	Installation services of machinery for food, beverage and tobacco processing
		99433216	Installation services of machinery for textile, apparel and leather production
		99433217	Installation services of machinery for paper and paperboard production
		99433218	Installation services of machinery for plastics and rubber
		99433219	Installation services of other special-purpose machinery
		99433220	Installation services of office equipment
		99433221	Installation services of electric motors, generators, transformers and electricity distribution and control apparatus
		99433222	Installation services of electrical control systems and panels
		99433223	Installation services of electronic equipment
		99433224	Installation services of TV and radio transmitters and professional TV, radio, telephone and video equipment
		99433225	Installation services of medical, surgical and orthopaedic equipment
		99433226	Installation services of industrial processes
		99433227	Installation services of clocks
99433228	Installation services of articles for indoor games		
99433229	Installation services of hydraulic and pneumatic valves		
99533200	Design and installation services of control systems for industrial processes and manufacturing facilities		
99533200a	Design and installation services of control systems for industrial processes		
99533200b	Design and installation services of automated manufacturing facilities		
